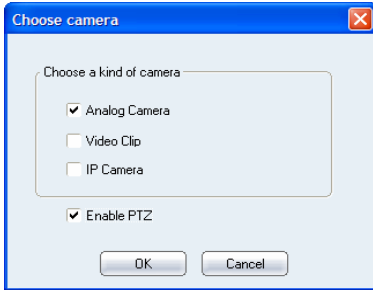
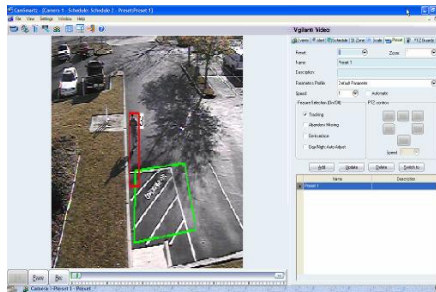


WeibrIDGE Networks Corporation presents X9-SA PTZ AutoTracker Edition - a new automated target object tracking for PTZ cameras. The PTZ AutoTracker Edition provides full automation of PTZ cameras by honing in and tracking target objects defined by the end user. This implementation breaks the current technology barriers as the application requires only one single PTZ camera vs. current multi-camera designs. Each Pre-set PTZ position incorporates its own unique detection rules and will perform video content analysis throughout the scanning tour. Previously WeibrIDGE analytics software delivered video analytics capabilities via fixed camera; however, the new PTZ AutoTracker software now enables use of automated detection and tracking on a single PTZ camera.

Analog/ IP - Fixed/PTZ



Target Tracking Based on Zone Rules



Advanced Reporting Capabilities



PTZ AutoTracker

Features and Benefits



Utilizing real-time video and advanced analysis algorithms, WeibrIDGE X9-SA PTZ AutoTracker Edition provides a unique blend of analytics and automated tracking. User defined rules alert personnel of intrusion events while commanding the PTZ to hone in & track an intruding human or vehicle. 360 degrees of roaming space can now be monitored automatically as the PTZ camera is guided while recording video. With neither coffee nor sleep, PTZ AutoTracker is always on target.

Features:

Object Detection

Real, relevant objects are detected - noise disregarded.

Object Recognition

Detected objects are classified into categories:

- Human, Vehicle, Big & Small Boat, Un-defined, etc.

Alarm Alerting -

Rule violations trigger audible, SMS and e-mail alerts:

- Intrusion into zone, Flow violation (directional) .
- Abandoned object, Missing object.

- Reporting and archive of events

- Web event viewing; User defined security reports;

SQL compliant database stores all event information.

Benefits:

PTZGuardz

- Sequencer interface for automated monitoring of the entire 360 degree view of the PTZ camera.

Hands-Off Tracking

- Reduces need for security personnel to manipulate joystick controls.

Multi-Tasking

- Handles multiple cameras without needing multiple joysticks or operators.

Light-Weight

- Captures short video clips of tracked objects reducing hard disk requirements.

US Office

Inner Harbor Center, 8th Floor, 400 East Pratt Street, Baltimore, MD 21202, USA
Tel: (301)880.0555

China Office

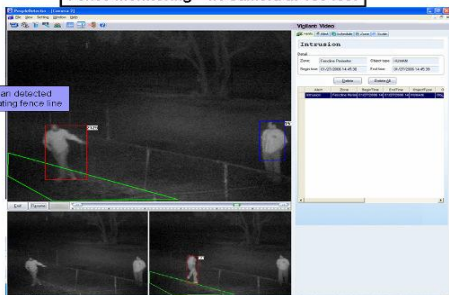
Suite B, Floor33, No.18, North CaoXi Road. Shanghai, China 200030
Tel: (21) 5459.0958
Fax: (21) 5459.0010

E-mail:

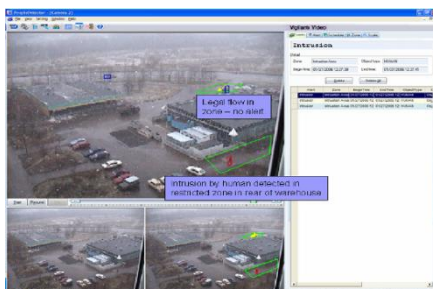
Sales:sales1@weibrIDGE.com
support:support1@weibrIDGE.com
General Enquiries:general1@weibrIDGE.com
www.weibrIDGE.com

Weibridge Video Analytics Use Cases

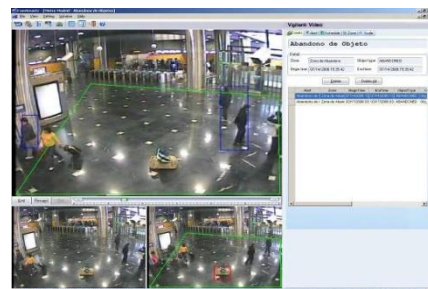
Fence Monitoring – IR Camera at 100 feet



Perimeter Monitoring



Lot Protection



Asset Protection

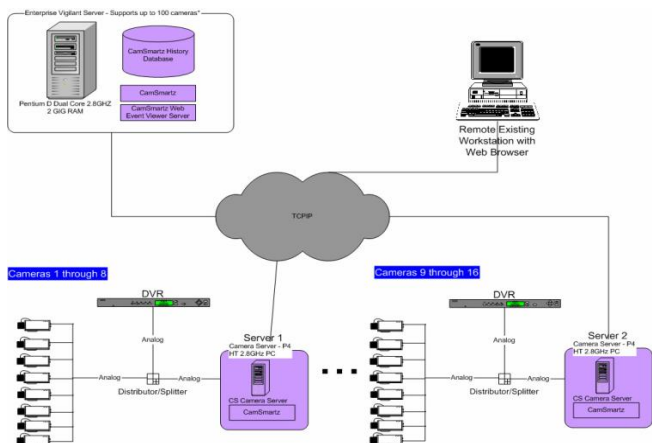
Weibridge Video Analytics Applications



- Protection of National Monuments
- Sensitive & Secured Areas
- Trespassing Areas based on Time
- Executive Offices
- Corporate Liability if intruder is harmed
- Transportation
Airports, Subways, Trains & Buses



Weibridge Analytics Architecture



PC Requirements



- Video Input - Up To 8 Channels (DirectX Compatible Video Capture)
- Processor—Intel P4 w/ Dual Core
- OS—Windows XP SP2 or
- Memory—1 GB

RESOLUTION	PAL	NTSC	#Chan./PC-CPU
FDI Square Pixel	640x576	640x480	2-4 Channels
HDI	352x576	352x480	1-8 Channels
SIF	352x288	352x240	1-8 Channels
SIF Square Pixel	N/A	320x240	1-8 Channels

About Weibridge

Weibridge is a leading provider of Advanced Video Analytics solutions for security and consumer behavior analysis applications. We specialize in diverse DSP application of Advanced Video Analytics software. We remain an innovative developer of video algorithm libraries and data mining technologies. Our applied solutions provide security professionals situational awareness and pertinent video information by utilizing the newest video automation techniques available in the CCTV market. Through real-time analysis of video feeds, Weibridge puts actionable information in the hands of those who need it and can use it most.

US Office

Inner Harbor Center, 8th Floor, 400 East Pratt Street, Baltimore, MD 21202, USA
Tel: (301)880.0555

China Office

Suite B, Floor 33, No. 18, North CaoXi Road, Shanghai, China 200030
Tel: (21) 5459.0958
Fax: (21) 5459.0010

E-mail:

Sales:sales1@weibridge.com
support:support1@weibridge.com
General Enquiries:general1@weibridge.com
www.weibridge.com